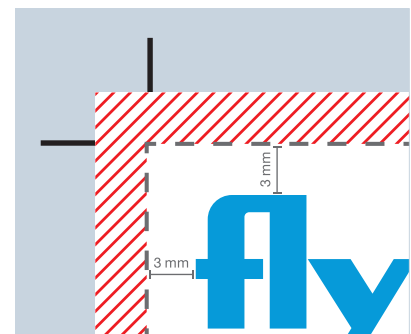
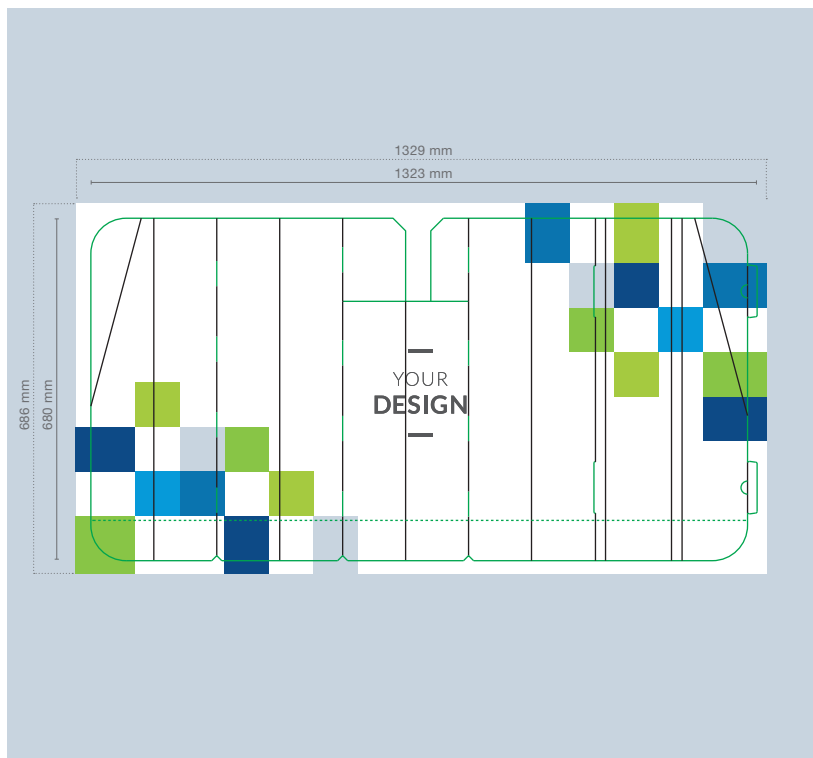





# DATENBLATT SONNENBLLENDE AUS KARTON GROSS

Um eine fehlerfreie und termingerechte Auftragsabwicklung zu gewährleisten und ein optimales Druckergebnis zu garantieren, bitten wir Sie, die nachfolgenden Anforderungen an Ihre Druckdatei zu beachten.



-  Beschnittzugabe
-  Schnittmarke
-  Schneiderand

Sie sind auf der Suche nach Gestaltungsvorlagen? Schauen Sie in unserem Download-center vorbei.

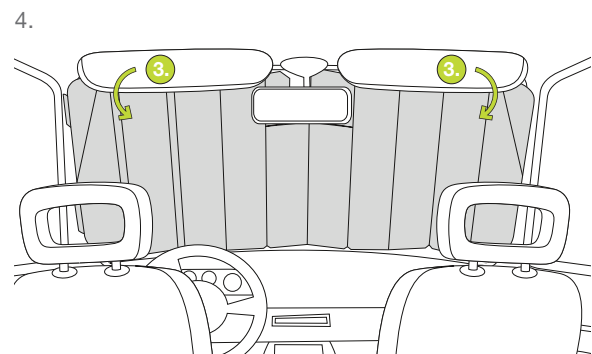
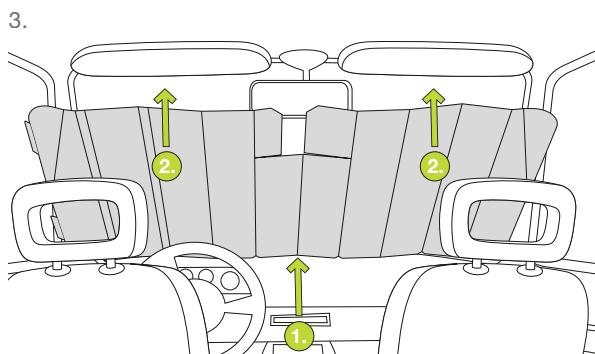
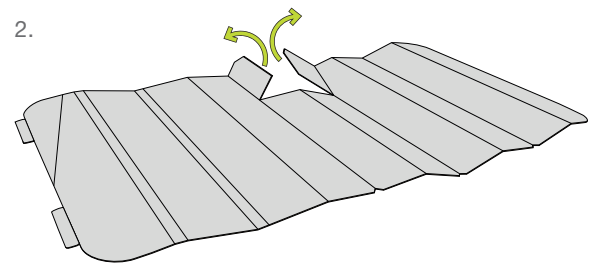
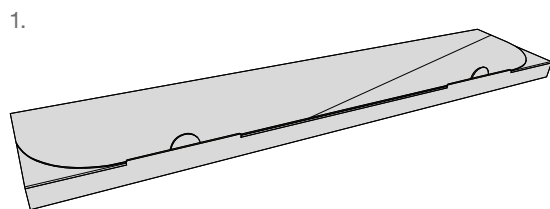
Elemente, die nicht angeschnitten werden dürfen (Bilder, Logos, Texte), sollten 2-3 mm entfernt vom Schneiderand platziert werden.

**TIPP!**

Endformat:	1323 x 680 mm
Dokumentformat:	1329 x 686 mm (auf jeder Seite werden 3 mm abgeschnitten)
Beschnitt:	3 mm
Auflösung:	optimal 300 dpi (minimal 150 dpi)
Farbmodus:	CMYK
Schnittmarken:	ausserhalb des Beschnitts
Datenformate:	PDF, JPG, TIF, EPS, PSD, AI
Schriften:	Schriften in Kurven umgewandelt
Zusatzkosten:	Konvertierung von Office-Daten (Word, Powerpoint, Excel, Publisher)

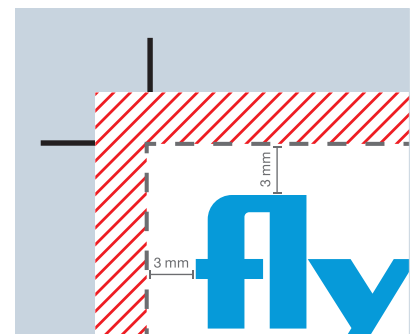
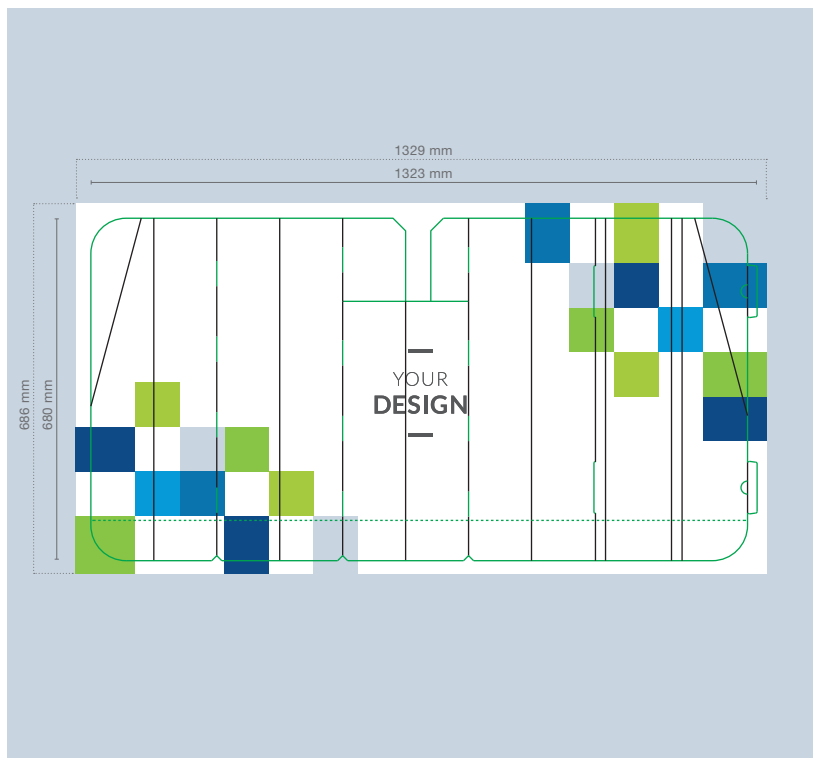
**Hilfe?** Wir beraten Sie gerne.




# MONTAGEANLEITUNG SONNENBLLENDE AUS KARTON



# FICHE TECHNIQUE PARE-SOLEIL EN CARTON GRAND

Afin que nous puissions assurer une exécution sans erreurs et dans les délais de votre commande et garantir ainsi un résultat d'impression optimal, veuillez respecter les exigences suivantes pour votre fichier d'impression.



-  Marge de rognage
-  Traits de coupe
-  Bord du document

Vous êtes à la recherche de modèles de mise en page ? Allez faire un tour dans notre centre de téléchargement.

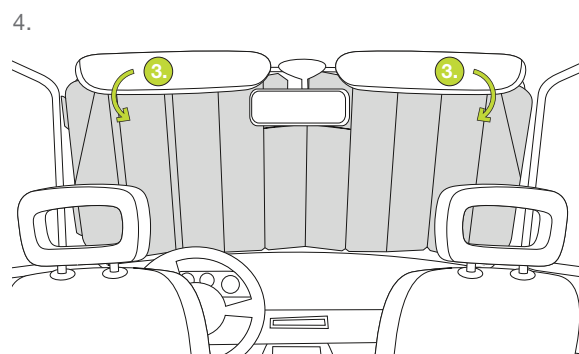
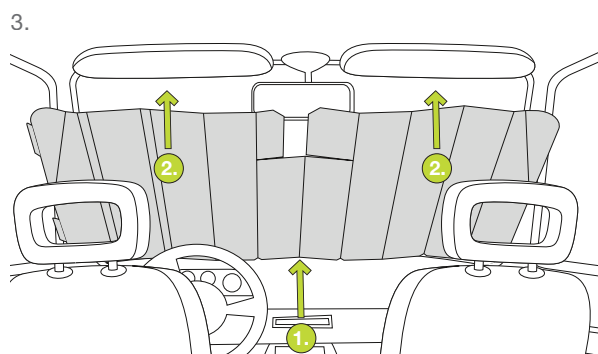
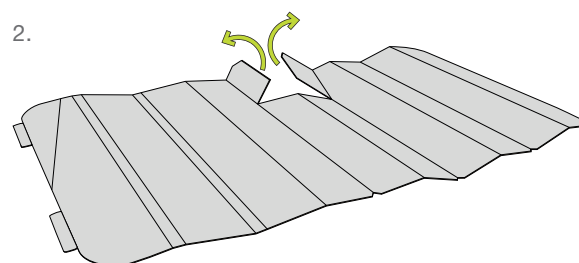
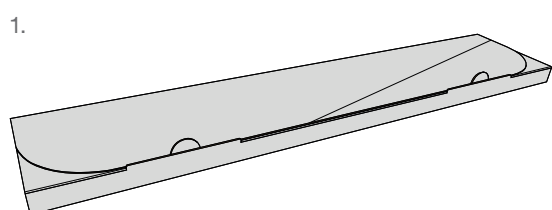
Les éléments qui ne doivent pas être coupés (photos, logos, textes) doivent être placés à 2-3 mm du bord de coupe.

**SUGGESTION!**

Format final:	1323 x 680 mm
Format du document:	1329 x 686 mm (3 mm sont supprimés de chaque côté)
Marge (débord):	3 mm
Résolution:	Optimal 300 dpi (au moins 150 dpi)
Mode couleur:	CMJN
Traits de coupe:	en dehors de la marge
Format de fichier:	PDF, JPG, TIF, EPS, PSD, AI
Écritures:	Écritures converties en courbes
Suppléments:	Conversion de fichiers Office (Word, Powerpoint, Excel, Publisher)

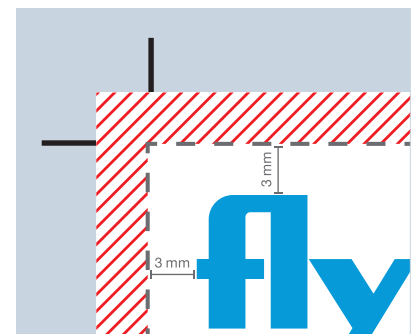
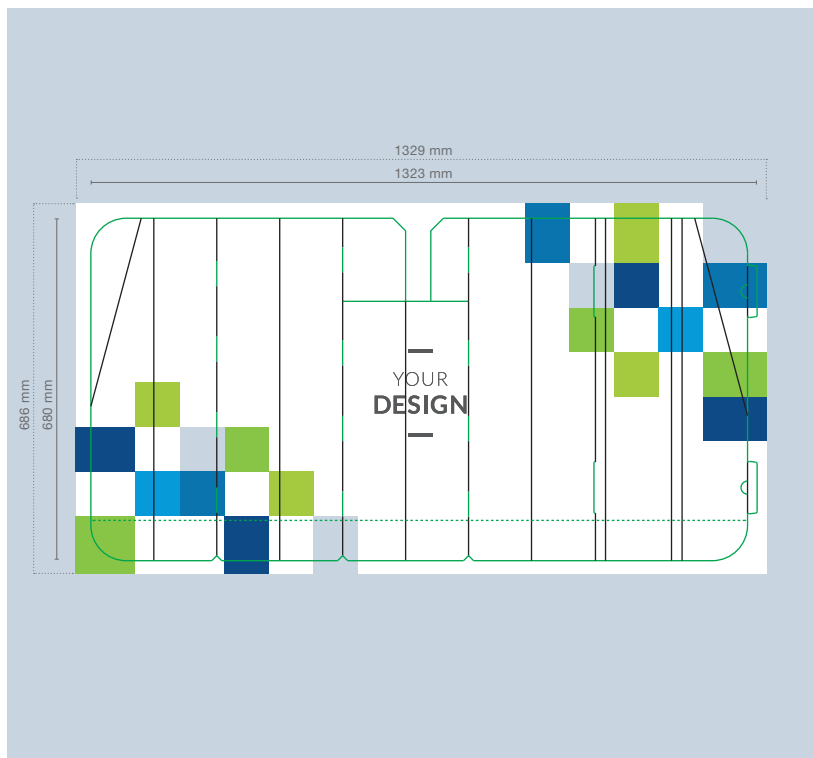
**Aide?** Nous nous ferons un plaisir de vous conseiller.




# INSTRUCTIONS DE MONTAGE PARE-SOLEIL EN CARTON



# FACT SHEET CARDBOARD SUN SHADE LARGE

To ensure that your order can be processed correctly and on schedule and also guarantee the very best print result possible, we ask that you please keep the following requirements in mind with regard to your print file.



-  Bleed difference
-  Trim marks
-  Cutting edge

Looking for templates? Then stop by our Download Centre.

Any elements that must not be trimmed (images, logos, text) should be positioned 2-3 mm away from the cutting edge.

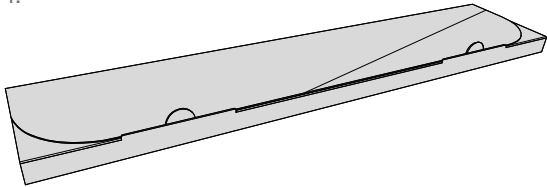
**TIP!**

Final format:	1323 x 680 mm
Document format:	1329 x 686 mm (3 mm will be trimmed off each edge)
Bleed:	3 mm
Resolution:	Optimum 300 dpi (minimum 150 dpi)
Colour mode:	CMYK
Trim marks:	outside the bleed
File formats:	PDF, JPG, TIF, EPS, PSD, AI
Fonts:	Fonts converted into curves
Additional fees:	Conversion of Office files (Word, PowerPoint, Excel, Publisher)

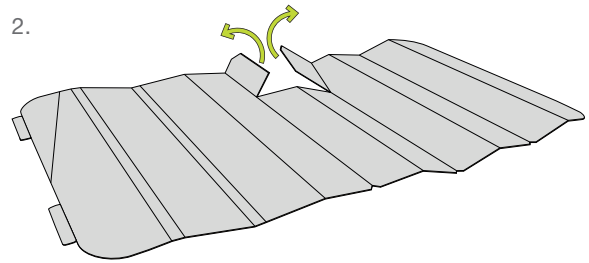
**Help?** We are happy to advise you.

# ASSEMBLY INSTRUCTIONS CARDBOARD SUN SHADE

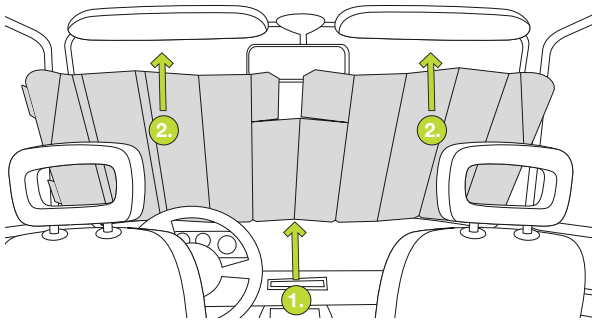
1.



2.



3.



4.

